



# TOP PLANTS

GREENS FOR YEARS

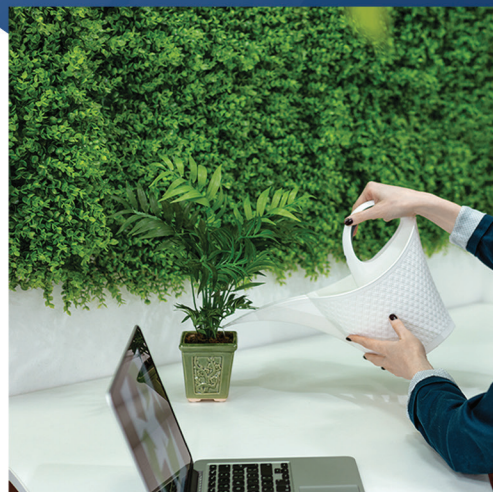
Enhance your space effortlessly with Foriage, designed to bring the beauty of nature indoors without the hassle of maintenance. Transform your space with the effortless elegance of Artificial Wall Plants and enjoy the beauty of nature every day.



## Transform Your Space with Artificial Wall Plants











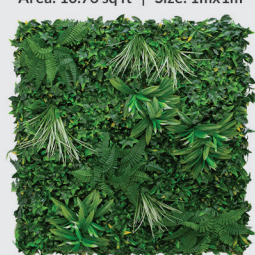


These lush, maintenance-free greens bring nature indoors without the hassle of watering or sunlight. Perfect for homes, offices, and commercial spaces, artificial wall plants create a vibrant, inviting atmosphere year-round. Easy to install and designed to last, they add a touch of natural elegance to any environment. Discover the perfect blend of style and simplicity with artificial wall plants today!

ON-HAND STOCKS



## Verdant Vibe Collection

Elevate your decor with the beauty and convenience of artificial wall plants.

<p>Area: 10.76 sq ft   Size: 1mx1m</p>  <p>CODE : F01-001</p> <p>SRP : ₹6,029.41</p>	<p>Area: 10.76 sq ft   Size: 1mx1m</p>  <p>CODE : F01-002</p> <p>SRP : ₹6,029.41</p>	<p>Area: 10.76 sq ft   Size: 1mx1m</p>  <p>CODE : F01-003</p> <p>SRP : ₹6,029.41</p>	<p>Area: 10.76 sq ft   Size: 1mx1m</p>  <p>CODE : F01-004</p> <p>SRP : ₹6,055.74</p>	<p>Area: 10.76 sq ft   Size: 1mx1m</p>  <p>CODE : F01-005</p> <p>SRP : ₹6,055.74</p>
<p>Area: 10.76 sq ft   Size: 1mx1m</p>  <p>CODE : F01-006</p> <p>SRP : ₹6,317.90</p>	<p>Area: 10.76 sq ft   Size: 1mx1m</p>  <p>CODE : F01-007</p> <p>SRP : ₹6,468.19</p>	<p>Area: 10.76 sq ft   Size: 1mx1m</p>  <p>CODE : F01-008</p> <p>SRP : ₹6,958.99</p>	<p>Area: 10.76 sq ft   Size: 1mx1m</p>  <p>CODE : F01-009</p> <p>SRP : ₹6,958.99</p>	<p>Area: 10.76 sq ft   Size: 1mx1m</p>  <p>CODE : F01-010</p> <p>SRP : ₹7,634.42</p>
<p>Area: 10.76 sq ft   Size: 1mx1m</p>  <p>CODE : F01-011</p> <p>SRP : ₹6,029.41</p>	<p>Area: 10.76 sq ft   Size: 1mx1m</p>  <p>CODE : F01-012</p> <p>SRP : ₹5,242.94</p>	<p>Area: 10.76 sq ft   Size: 1mx1m</p>  <p>CODE : F01-013</p> <p>SRP : ₹5,242.94</p>		

## Transform Your Space with Artificial Wall Plants

Pre-order your lush, maintenance-free Foliage wall plant today and bring the beauty of nature indoors without the need for watering or sunlight. Perfect for homes, offices, and commercial spaces, these vibrant artificial plants create an inviting, green atmosphere year-round. With easy installation and durable design, they add an effortless touch of natural elegance to any environment. Don't miss out—reserve your Foliage wall plant now and experience the perfect blend of style and simplicity!

**PRE-ORDER**



Elevate your decor with the beauty and convenience of artificial wall plants.

Area: 10.76 sq ft | Size: 1mx1m



CODE : AD1136

Area: 10.76 sq ft | Size: 1mx1m



CODE : AD1137

Area: 10.76 sq ft | Size: 1mx1m



CODE : AD1138

Area: 10.76 sq ft | Size: 1mx1m



CODE : AD1139

Area: 10.76 sq ft | Size: 1mx1m



CODE : AD1140

Area: 10.76 sq ft | Size: 1mx1m



CODE : AD1141

Area: 10.76 sq ft | Size: 1mx1m



CODE : AD1142

Area: 10.76 sq ft | Size: 1mx1m



CODE : AD1143

Area: 10.76 sq ft | Size: 1mx1m



CODE : AD1144

Area: 10.76 sq ft | Size: 1mx1m



CODE : AD1145

Area: 10.76 sq ft | Size: 1mx1m



CODE : AD1146

Area: 10.76 sq ft | Size: 1mx1m



CODE : AD1147

Area: 10.76 sq ft | Size: 1mx1m



CODE : AD1148

Area: 10.76 sq ft | Size: 1mx1m



CODE : AD1149

Area: 10.76 sq ft | Size: 1mx1m



CODE : AD1150



# TOP PLANTS

GREENS FOR YEARS

## Product Features

Here are some standout features of Foriage, our premium artificial wall plant. Designed to bring a lush, green aesthetic into any space, Foriage offers realistic texture and vibrant color that mimics natural plants without the maintenance.

With easy installation, UV resistance for outdoor use, and eco-friendly materials, Foriage provides a long-lasting, hassle-free solution for adding a touch of nature to walls, indoors or out. Discover how Foriage can transform your environment with lasting beauty and zero upkeep.



Panel Size: 100x100cm



100% pure PE Material, 100% recyclable; GRS products can be chosen



3 years warranty for outdoor use and 20 years for indoor use



Full and luxuriant, beautiful from any angle



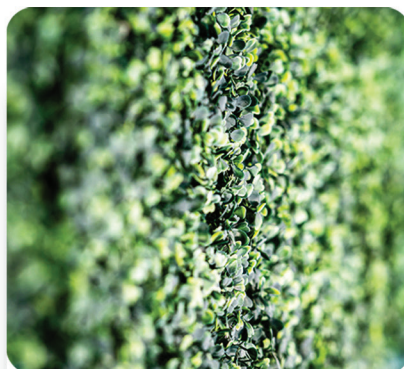
Perfect for indoor and outdoor applications



Weatherproof



Quick and easy to install



Evergreen and maintenance free



## Advantages

Enhance your space effortlessly with Foriage, designed to bring the beauty of nature indoors without the hassle of maintenance. Transform your space with the effortless elegance of Artificial Wall Plants and enjoy the beauty of nature every day. Here are the standout features:



**Anti-UV**  
**Anti-fade feature**  
**3 years outdoor warranty**



**Premium Mold and Finish**  
**for a Lifelike Look**



**Non-toxic**  
**100% Pure Raw Materials**



**Easy Installation and Wide**  
**Application**



**Hassle-Free Maintenance**

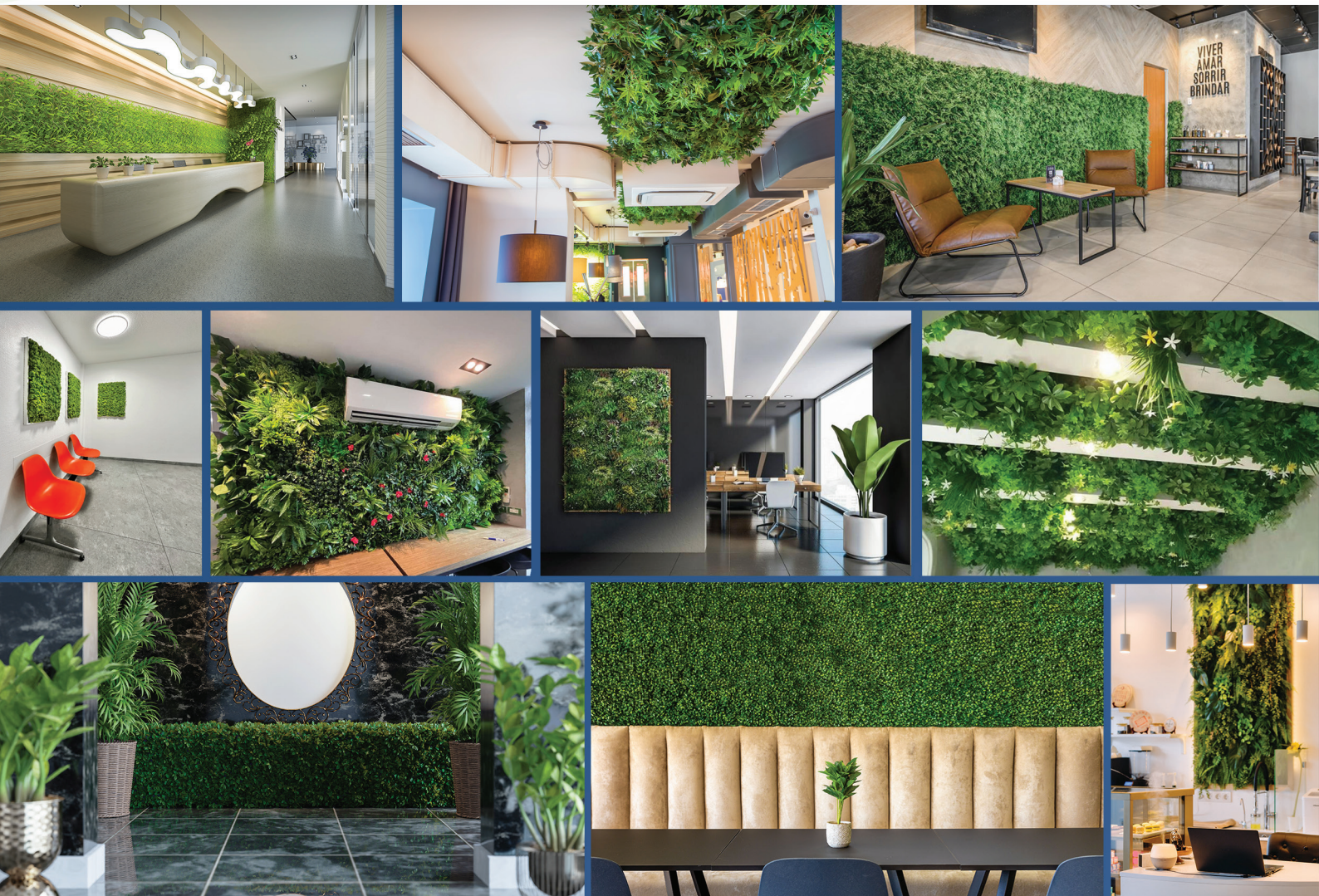


# TOP PLANTS

GREENS FOR YEARS

## INDOOR APPLICATIONS

Artificial plants are a great option for indoor spaces because they provide the aesthetic and calming benefits of greenery without the maintenance requirements of real plants. Unlike live plants, artificial ones don't need sunlight, water, or regular care, making them ideal for homes or offices with limited natural light or for people with busy schedules. They also don't attract pests or suffer from issues like wilting, overwatering, or seasonal changes, ensuring a consistent look year-round. Additionally, modern artificial plants are made with high-quality materials that closely mimic the appearance of real plants, adding a touch of nature and freshness to any indoor environment without the hassle.





# TOP PLANTS

GREENS FOR YEARS

## OUTDOOR APPLICATIONS

Artificial plants are a smart choice for outdoor spaces because they offer long-lasting beauty without the challenges that real plants often face in outdoor environments. They are resistant to weather conditions like extreme heat, cold, or drought, ensuring they maintain their vibrant appearance throughout the year. Unlike live plants, artificial ones don't require watering, fertilizing, or pruning, making them perfect for areas where consistent care might be difficult, such as vacation homes or public spaces. Additionally, they are immune to pests and diseases that can damage real plants. With advances in UV-resistant materials, modern artificial plants can withstand prolonged sun exposure without fading, providing a hassle-free, attractive solution for outdoor decor.



# INTERESTED?

Contact us or Partner with Us



**+63917-300-7178**  
**+63917-563-8580**



**info.topline88@gmail.com**

Unit 2218, 22nd Floor, High Street Corporate Plaza Tower 1, 26th St.,  
Fort Bonifacio Taguig City, 1634 Metro Manila, Philippines



**TOP LINE**  
YOUR PARTNER IN DISTRIBUTION



**TOP PLANTS**  
GREENS FOR YEARS